

# Ballraíochtaí Corparáideacha Corporate Memberships



Ag freastal ar an Dún  
agus Ard Mhacha Theas  
Serving Down  
and South Armagh



Comhairle Ceantair  
an Iúir, Mhúrn agus an Dúin  
Newry, Mourne and Down  
District Council

# Elevate Wellness and Energise Performance with our Corporate Memberships

It is widely known that people who exercise regularly experience benefits that can boost personal wellbeing and professional performance. Encouraging exercise can create a healthier, more productive, and resilient workforce which brings many business benefits such as:



**Reduced Sickness  
Absence**



**More Energy &  
Improved Job  
Performance**



**Less Stress**

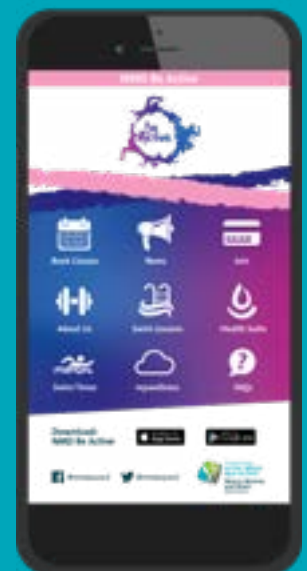


**Happier & More  
Motivated  
Employees**

At Newry, Mourne and Down District Council we offer corporate discounts on our Platinum All-Inclusive package. This gives members unlimited, multi-site access to gym, swim, health suite and commercial fitness classes at Newry Leisure Centre, Down Leisure Centre, Kilkeel Leisure Centre, Ballymote Sports and Wellbeing Centre and the Newcastle Centre. Join up and enable your staff to benefit from:

- Tailor made fitness programmes by fully qualified fitness instructors
- Smarter workouts, set exercise goals, tracked progress and fitness stats for the perfect workout plan with the 'My Wellness' Technogym app
- Easy online booking with our NMD Be Active app
- Early morning to late evening workouts available

**Check out our Centres...**



**NMD Be Active app**

# Newry Leisure Centre



**With a Platinum All-Inclusive membership, have unlimited multi-site access to**

- 8 lane 25m pool
- Learner & leisure pool with fun water features
- Health suite with sauna, steam room, jacuzzi pool and heated stone seating
- Commercial fitness classes available to book easily online through the NMD Be Active app
- Fully air-conditioned 80+ station state of the art Technogym fitness suite

## **Additional facilities available to hire at competitive rates include:**

8 court and 4 court sports halls accommodating a range of sports such as football, badminton, basketball, table tennis and netball | Squash courts | Handball court | Spin studio | Multi-purpose rooms with audio visual capability | Children's soft play centre.

### **Centre Opening Hours:**

Monday, Wednesday & Friday	6.30am – 9.30pm
Tuesday & Thursday	8.00am – 9.30pm
Saturday	9.00am – 5.00pm
Sunday	10.00am – 5.00pm





# Down Leisure Centre



**With a Platinum All-Inclusive membership, have unlimited multi-site access to**

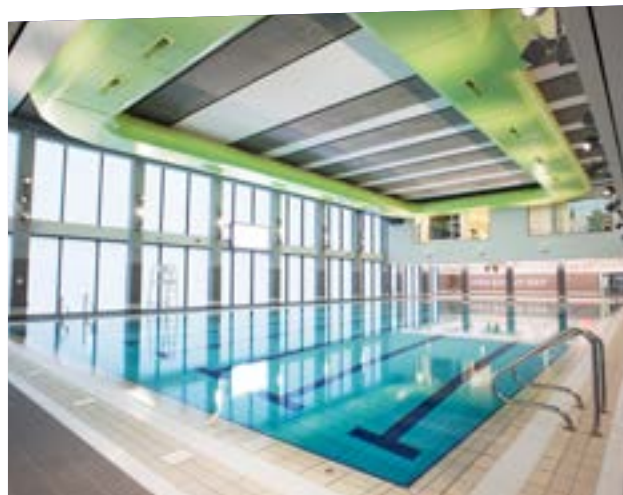
- 6 lane 25m pool
- Learner pool with fun water features
- Vitality Suite with sauna, steam room, Vitality Pool and heated stone bed
- Commercial fitness classes available to book easily online through the NMD Be Active app
- Fully air-conditioned 75+ station state of the art Technogym fitness suite

**Additional facilities available to hire at competitive rates include:**

4 court sports hall accommodating a range of sports such as football, badminton, basketball, table tennis and netball | Squash court / Handball court | Spin studio | Meeting room & multi-purpose rooms with audio visual capability.

**Centre Opening Hours:**

Monday, Wednesday & Friday	6.30am – 10.00pm
Tuesday & Thursday	8.00am – 10.00pm
Saturday	9.00am – 4.30pm
Sunday	10.00am – 4.30pm



# Kilkeel Leisure Centre



**With a Platinum All-Inclusive membership, have unlimited multi-site access to**

- 6 lane 25m swimming pool
- Health suite with sauna, steam room and jacuzzi pool
- Commercial fitness classes available to book easily online through the NMD Be Active app
- Fully air-conditioned 30+ station fitness suite

## **Additional facilities available to hire at competitive rates include:**

3 court sports hall accommodating a range of sports such as football, badminton, basketball, table tennis, netball and pickleball | Squash court | Meeting room with audio visual capability.

---

### **Centre Opening Hours:**

Monday – Friday	9.00am – 9.00pm
Saturday	9.00am – 4.00pm
Sunday	1.00pm – 4.30pm



# Ballymote Sports & Wellbeing Centre

With a Platinum All-Inclusive membership, have unlimited multi-site access to

- Fully air-conditioned 20+ station fitness suite

**Additional facilities available to hire at competitive rates include:**

4 court sports hall accommodating a range of sports such as football, badminton, basketball, table tennis and netball.

---

#### Centre Opening Hours:

Monday – Friday	9.15am – 10.00pm
Saturday	9.45am – 4.00pm
Sunday	1.00pm – 6.00pm



# Newcastle Centre

With a Platinum All-Inclusive membership, have unlimited multi-site access to

- Fully air-conditioned 25+ station fitness suite
- Health suite with sauna and steam room

**Additional facilities available to hire at competitive rates include:**

Meeting rooms / multi-purpose rooms with audio visual capability | Outdoor meanwhile use area | Tropicana outdoor heated swimming pools (July & August seasonal opening).

---

#### Centre Opening Hours:

Monday – Friday	9.00am – 9.00pm
Saturday	9.00am – 4.00pm
Sunday	Closed





# Other services provided in our Leisure Centres include:



Health screening and body composition analysis of body fat mass, muscles mass, muscle quality score, total body water, bone mass, body type, basal metabolic rate & age, body mass index, calorie intake and resting heart rate

.....



Highly qualified staff with extensive knowledge on fitness and how to improve health & wellbeing

.....



Online booking of classes and via NMD Be Active app

.....



PARS (Physical Activity Referral Programme) GP Referral programme for people with health-related conditions who may benefit from prescribed physical activity, under the guidance of qualified exercise professionals

.....



Swimming lessons available for children aged 4+. Adult lessons also available

.....



Be Active for Life, a programme of low to moderate physical activity classes available to all ages and abilities

.....



Autism swim sessions in a sensory friendly environment for families with members who have autism

.....



Accessible, inclusive Changing Places facilities



# Corporate Discounts

The standard cost of our Platinum All-Inclusive membership is £32.70 per person, per month, however the following discounts are available to companies, sports clubs and social organisations when a minimum of 10 people join up.

Membership Type	Eligibility	Level of Discount	Price (Direct Debit Monthly Payment Only)
Platinum All-Inclusive Corporate 10+	10 – 19 members per organisation	12.5%	<b>£28.60</b> Paid directly by employee or member
Platinum All-Inclusive Corporate 20+	20+ members per organisation	25%	<b>£24.70</b> Paid directly by employee or member
Platinum All-Inclusive Corporate 20+ (Employer Paid)	20+ members per organisation	30%	<b>£22.90</b> Paid directly by employer, sports club or organisation

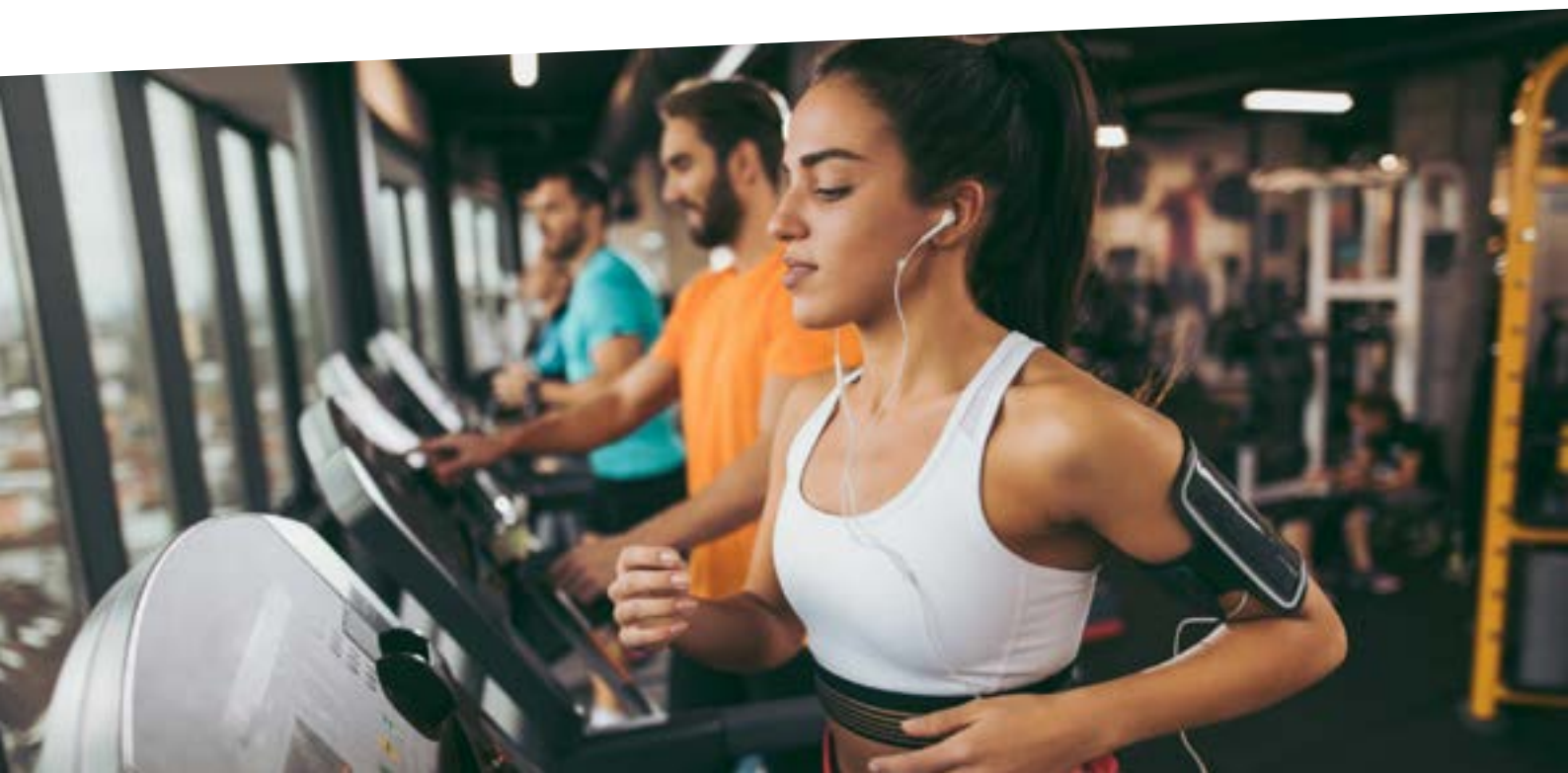
\*Prices subject to annual review

## How To Sign Up

To find out more information, to arrange an enrolment event or to submit completed application forms.

EMAIL

[Indoor.Leisure@nmandd.org](mailto:Indoor.Leisure@nmandd.org)





# Corporate Membership Scheme Terms & Conditions

1. All new corporate memberships must be applied for through the Commercial Officer who can be contacted via email on [Indoor.Leisure@nmandd.org](mailto:Indoor.Leisure@nmandd.org)
2. All employees / organisation members wishing to avail of the corporate membership must complete an application pack which includes a Health Commitment Statement.
3. Members must abide by the Code of Conduct, Centre Terms & Conditions, Membership Terms and Conditions, Customer Charter and any other admission policies.
4. Membership is non-transferable and discounts are not applicable to non-organisation individuals.
5. All persons taking up membership must complete a free induction session before the use of the fitness suite.
6. All bookings are subject to normal Terms and Conditions.
7. Excludes swimming lessons, Be Active for Life / Health classes and 3rd party events.
8. Prices will be reviewed on an annual basis and may be subject to change.
9. All corporate organisations must identify a designated Account Manager who will coordinate membership applications and will manage the account with Council's Commercial Officer.
10. Employees who want to join the scheme after its initial set up will be required to present proof of employment and photographic ID to reception to verify their employment. Members of clubs and social organisations must also present a completed club affiliation form, signed by the designated Account Manager.
11. Employees may be required to produce their payslip from the organisation every six months to prove their eligibility.
12. Payments: Employee Paid Direct Debits will be collected from each employee's bank account monthly. Employer Paid Direct Debits will also be collected monthly for all employees signed up to the scheme. Should an organisation recoup these fees from their employees, it is the organisations responsibility to manage this. A pro-rata fee may apply if a membership starts before the first Direct Debit collection, and this fee must be paid upon joining.
13. All corporate memberships will be reviewed regularly through the organisation's Account Manager to ensure ongoing eligibility to the scheme and to ensure correct discounts are being applied. Discount levels are variable in accordance with numbers enrolled.
14. Membership discount ceases if an employee departs the organisation.
15. Corporate membership is for a minimum period of 6 months, during which time members cannot cancel their membership. After 5 Direct Debit payments, membership may be cancelled by giving 1 months written notice and members are therefore required to make 1 further full Direct Debit payment. If an employee / member wishes to cancel their membership, they must notify their Account Manager who must then notify the Commercial Officer.
16. Membership of St Colman's Sports Complex and admission to Tropicana is excluded from Platinum All-Inclusive memberships.



**For more information, arrange an enrolment event or to progress a corporate membership get in touch!**

**Email:** [Indoor.Leisure@nmandd.org](mailto:Indoor.Leisure@nmandd.org)

**Telephone:** 0330 137 4026

**Visit our website:** [www.newrymouredown.org/leisure-and-sport](http://www.newrymouredown.org/leisure-and-sport)

Download our App: **NMD Be Active App**



[@nmdcouncil](https://twitter.com/nmdcouncil)



[@NMDBeActive](https://facebook.com/NMDBeActive)